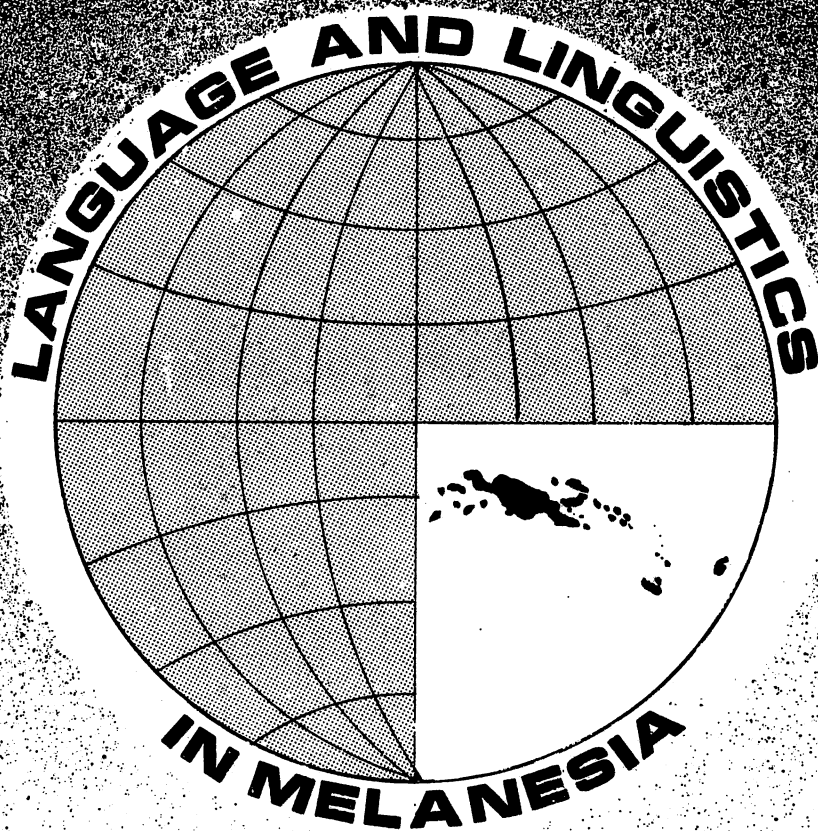


2-1 61 W77



Volume 17

1988 (for 1986)

Number 1-2

**JOURNAL OF THE LINGUISTIC SOCIETY  
OF PAPUA NEW GUINEA**

Language and Linguistics in Melanesia (formerly Kivung) is published by the Linguistic Society of Papua New Guinea.

Editor: John W.M. Verhaar  
Review Editor: Tom Dutton  
Associate Editors: Terry Crowley, Paul Geraghty, John Lynch,  
Andrew Taylor

Editorial advisors:  
Robert A. Blust, University of Hawaii  
Joel Bradshaw, University of Hawaii  
William Foley, Australian National University  
Karl Franklin, Summer Institute of Linguistics, P.N.G.  
George Grace, University of Hawaii  
Kenneth Gregerson, Summer Institute of Linguistics,  
Dallas  
John Haiman, University of Manitoba  
Peter Mühlhäusler, Oxford University  
Andrew Pawley, University of Auckland  
Albert Schütz, University of Hawaii  
S.A. Wurm, Australian National University

All editorial correspondence for the articles section should be addressed to:

John W.M. Verhaar, S.J.  
Divine Word Institute  
P.O. Box 483, MADANG  
Papua New Guinea

All editorial correspondence for the reviews section should be addressed to:

Tom E. Dutton  
Department of Linguistics  
Research School of Pacific Studies  
The Australian National University  
Box 4, CANBERRA, A.C.T. 2601  
Australia

All business correspondence, including orders, subscriptions, etc., should be addressed to:

The Secretary  
Linguistic Society of Papua New Guinea  
P.O. Box 418  
UKARUMPA, via LAE  
Papua New Guinea

Language and Linguistics in Melanesia is published in two issues in one volume each year. Volume 14 is 1983. There are no volumes for 1984 to 1986, inclusive. Volumes 15ff are being published at a rate so that volume 19 will be the last volume to be published in 1988.

Contributors should follow the stylesheet printed at the back of this volume. Contributions should be submitted in two copies.

Areally, Language and Linguistics in Melanesia covers the linguistics situation in Melanesia, where one fourth of the world's languages are spoken, as symbolized by the cover design.

Subscription rates are as follows:

Institutions	K 20.00	includes membership of the LSPNG
Individuals	K 7.50	
Undergraduate students from Melanesia	K 1.00	

Airmail rates and rates for back issues will be supplied on request, by the secretary. Subscriptions may be remitted in USA or Australian currency as an alternative to remitting PNG kina.

**LANGUAGE AND LINGUISTICS  
IN MELANESIA**

**(FORMERLY KIVUNG)**

**JOURNAL OF THE LINGUISTIC SOCIETY  
OF PAPUA NEW GUINEA**

**Volume 17    1988 (for 1986)    No 1-2**

PUBLISHED 1987

Printed by the S.I.L. Printing Department  
Ukarumpa, E.H.P., Papua New Guinea

## STYLE SHEET FOR AUTHORS

The Editor of Language and Linguistics in Melanesia wishes to leave to authors as much freedom as possible in regard to format, provided that that format is not too esoteric, and is followed consistently throughout the article/review. The Editor sees no merit in having total uniformity of format between one article/review and another.

Some things, however, are "musts". The Editor can take care of most of them. The following are the author's responsibility.

### (1) Face sheet

The face sheet (or "title page") is the first sheet of the MS, no matter whether it or the next page is numbered "1". It must contain:

- (a) Title; author's name; author's affiliation.
- (b) Well below the place of (a), the author's name and full address should be typed. (In case there is more than one author, (b) should be the name and address of the author responsible for proofreading.)
- (c) See also (7), (a), below.

If there is an "Abstract", that should appear on the page following the title page.

### (2) Typing format; type face

Please use double space throughout, also for Notes and References. Begin the Notes on a new page, and the same with the References.

Italics in print should appear in the typescript either in italics or underscored. If your italics have a different pitch from your roman, it will interfere with the alignment requirement of (b), below; in that case, better avoid italics, for any marking at all, throughout the paper.

"Script" should be avoided altogether.

### (3) Illustrations and tables

These should appear on separate sheets; the places where they are to appear in the body of the text should be clearly marked in the Ms. All should be numbered consecutively with Arabic numerals. (Do not use expressions like "the following table".)

(4) References in the body of the text

For reference to a publication, use author's last name plus year (plus page numbers if required). Either all of that, or all minus the author's name, should be in parentheses, as the context requires. For example:

Marshall (1964: 12) finds complications in this regard in some NAN languages.  
As several phonologists have noted (Banke 1975: 15; Rubo 1979a: 1134; Lavière 1981: 16 and *passim*), epenthesis presents special problems for this type of interpretation.

(5) List of references

Titles of books, journals, and series are to be underscored or italicized; titles of articles must be enclosed in double quotes. For punctuation and capitalization, see examples below. Use caps to begin **all** operative words in a title **only** for titles of **journals** and titles of **series** (**not** for titles of books and titles of articles). If you wish to add a series title, place it at the end of the entry, enclosed in brackets.

For italics, see (2) above, second para.

(a) Book (monograph)

Entwistle, Gerard P. 1973. Approaches to bilingualism. Fargo: Northeastern University Press.

(b) Book (collection)

Dry, F.C.; Beech, Charles R.; and Mallory, Thomas (eds). 1981. Aspects of verb serialization. Birmingham: Brooks.

Cunningham, Carl J., Jr. (ed.). 1977. Studies in pidgin and creole languages. Newcastle: The University of Newcastle Press [Studies in Sociolinguistics 5].

(c) Articles in journals or collections

Upthorne, Craig. 1966. "OV order and ergative languages". Studies in Melanesian Languages 15: 2-17.

Morissette, Léon. 1977. "How to avoid substratomania". In: Cunningham (ed.) 1977: 37-56.

Note that the Cunningham item **must** be added in the References, **even** if the **only reason** it is cited is reference to the Morissette article.

Titles of journals should be written in full: for

example, do not write "SML", but "Studies in Micronesian Linguistics".

(d) Forthcoming publications  
For example:

Finness, Peter Q. Forthcoming. "Morphological derivation and creolization". To appear in Language and Languages. Hausmeister, Jürgen Th. In press. The languages of Vanuatu. Suva: Fiji Press.

(6) Linguistic data and glosses

Citation forms in the body of the text should be underscored or italicized and followed (without comma) by the gloss, which is to be enclosed in single quotation marks.  
Cited data in numbered examples should be underscored or italicized for **any** language other than English. Kindly observe the following:

(a) As noted, underscore or italicize the original. (On italics, see (2), second para., above.)

(b) Type morpheme-by-morpheme gloss **underneath** (not beside) the original; align the left boundary of every gloss morpheme with the left boundary of the corresponding morpheme of the original.

(c) Type the "free gloss" **underneath** the morpheme-by-morpheme gloss (not beside it or beside the original); enclose the free gloss in **single** quotes.

(d) Indent all numbered examples.

(e) Enclose each number in parentheses; and use such parenthesized numbers **also** in the body of the text whenever reference to such examples is made.

(f) If separation of bound morphemes in the original is needed or preferred, use the dash (" - ") which is matched by a space in the interlinear gloss; in the latter, use the colon (" : ") whenever separation in the original is irrelevant, or not segmentally identifiable. (Neither dash nor colon should cross word boundaries.)

Examples (alternative for (1) is (2); for (3), (4)):

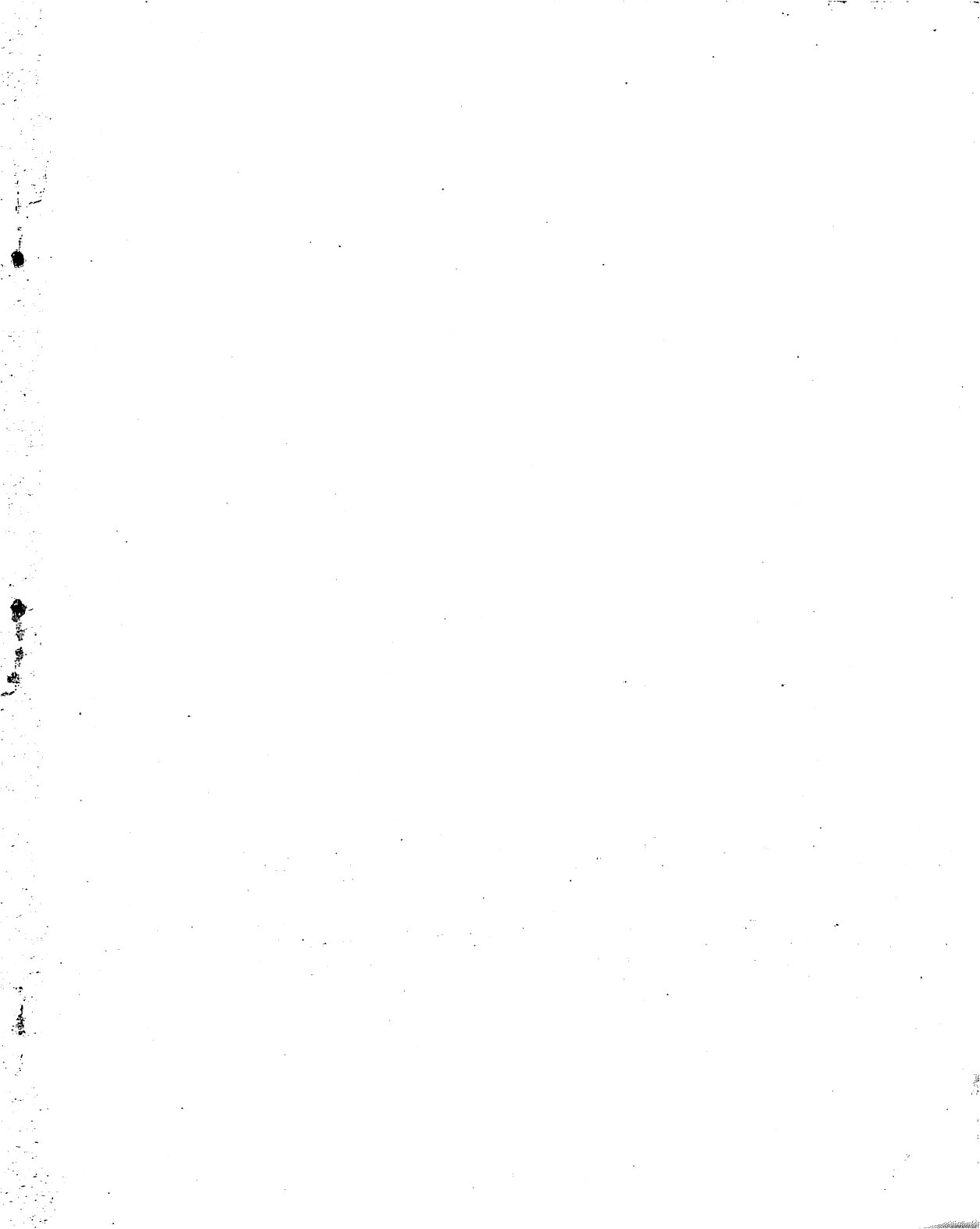
- (1) Vas            v                    -ekerula.  
boy:ABS    sg:masc:Abs    run  
'The boy runs'.
- (2) Vas            vekerula.  
boy:ABS    sg:masc:ABS:run  
'The boy runs'.
- (3) K            -at                    -ka                    -cuku-x.  
ASP        2sg:ABS        1pl:ERG        seek ACT  
'We seek you'.
- (4) Katkacukux.  
ASP:2sg:ABS:1pl:ERG:seek:ACT  
'We seek you'.
- (5) Puer            puellam            amat.  
boy:NOM    girl:ACC        love:1sg:PRES:IND:ACT  
'The boy loves the girl'.

(7) Other

(a) For **emphasis** bold type or double underscore may be used; or a marking of your own choosing. Identify your choice on the face sheet. For **emphasis** do not use: italics, single underscore, caps; or spaced typing.

(b) Indicate a **new paragraph** by indenting the first line; do not use interlinear space for the **sole** purpose of marking a new paragraph.





CONTENTS

Phonological processes affecting segments in Angave. ....	Richard F. Speece	1-139
Haruai verb structure and language classification in the Upper Yuat ....	Bernard Comrie	140-160
Reviews: Paul A. Geraghty: The history of the Fijian languages (M.D. Ross)		161-165

\*

Published by  
The Linguistic Society of Papua New Guinea

---